



THE  
RELAY  
BUILDING

1 COMMERCIAL ST, E1



# TWO FLOORS OF CREATIVE WORKSPACE!

From 7,600 - 23,497 sq ft

The Relay Building has been designed as a catalyst for attracting a new generation of occupier to Aldgate & Whitechapel. It provides sociable and flexible warehouse inspired space and currently two whole floors of outstanding open plan offices with top class architectural design. Styled for modern businesses with a progressive outlook, The Relay Building aims to bring together a dynamic community of like-minded tenants who are adopting new attitudes towards mutual workstyles, sharing ideas and making connections.




Exposed Ceilings & Services



Refurbished Shower & Changing Facilities



Refurbished Building Reception



3 x 13 Person Lifts



LG7 Lighting Standard



Manned Reception



Cycle Storage



Fan Coil Air Conditioning




3.3m slab to slab height



Car Parking



EPA Rating level C (51-75)



Accessible Raised Floors

SPECIFICATION







RECEPTION

The Relay Building has undertaken a refurbishment to the main building reception area, to provide a contemporary and welcoming arrival experience.

# A NEW ARRIVAL EXPERIENCE



ENTRANCE

END OF JOURNEY FACILITIES

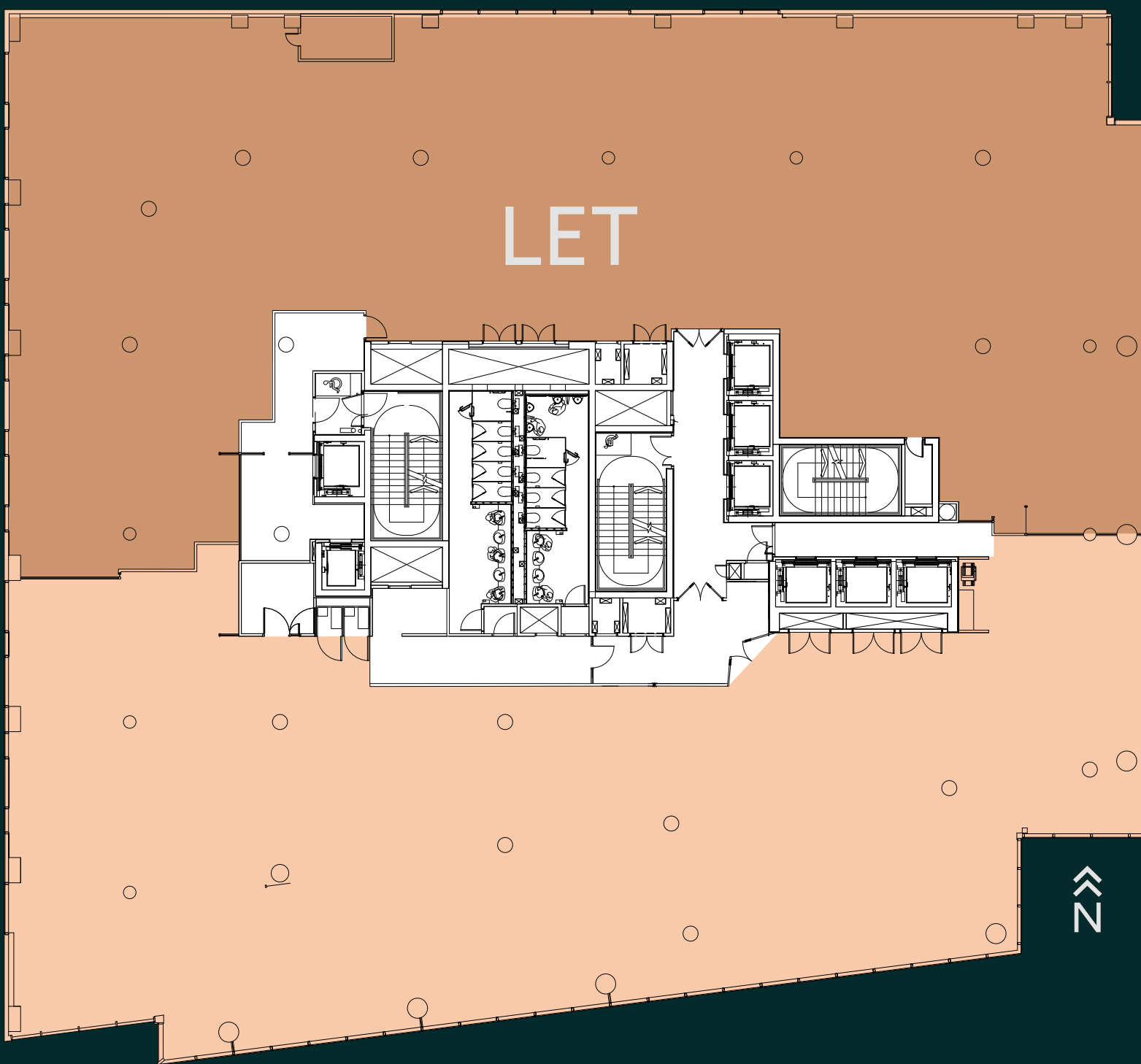






# PLUG & PLAY OPTION

The available part-floor is currently offered in a fitted condition in a modern, warehouse style fit-out.



## 5TH FLOOR

PART FLOOR -  
7,600 SQ FT  
706.1 SQ M

- AVAILABLE
- CORE

NOT TO SCALE. INDICATIVE ONLY.

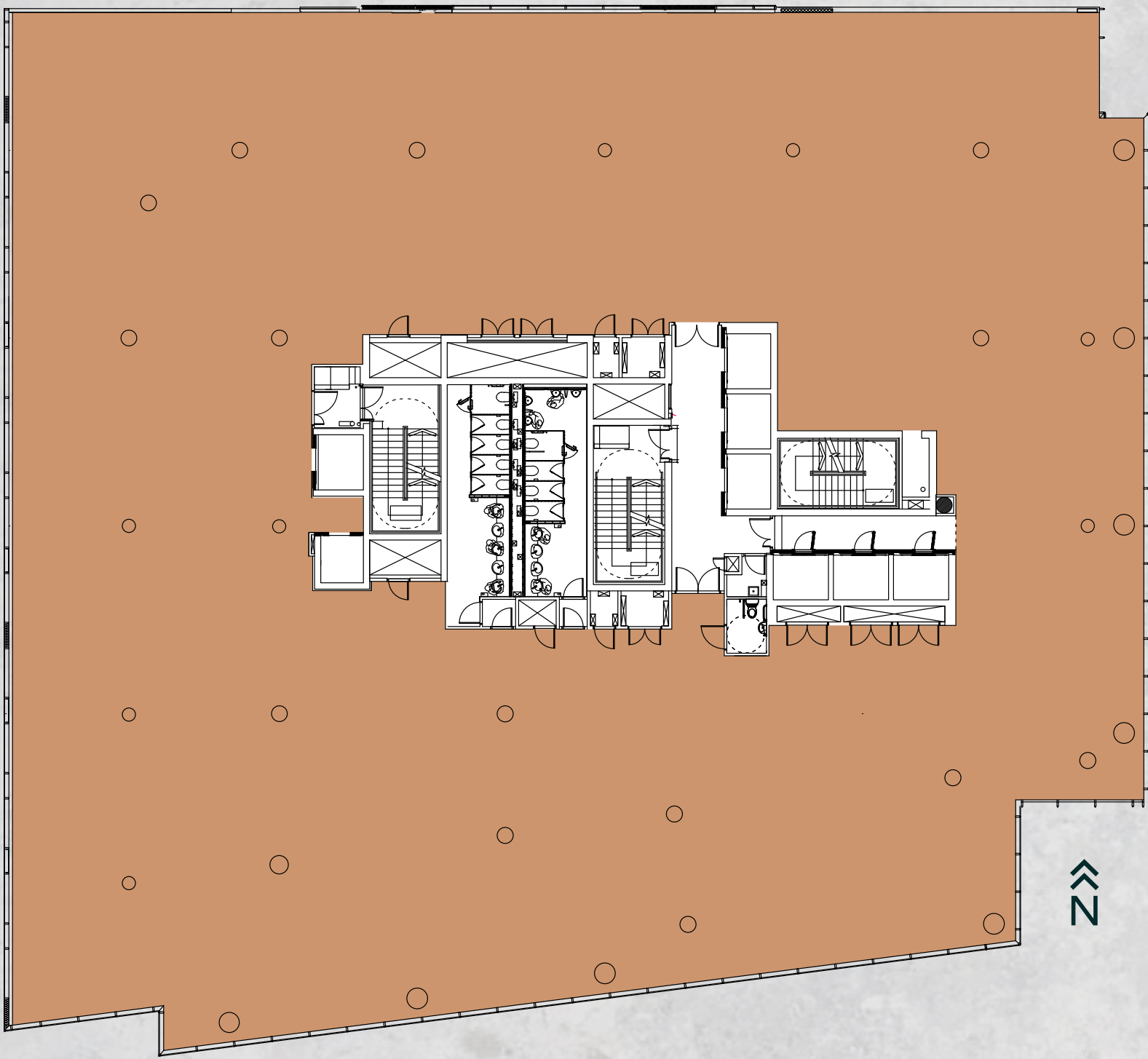




# A FRESH START



The 6th floor is currently fitted out, with a plan to return this to a Cat A floor offering, allowing a potential occupier to tailor the floor plates to their specific fit-out needs.



## 6TH FLOOR

15,897 SQ FT  
1,477 SQ M

- OFFICE SPACE
- CORE

NOT TO SCALE. INDICATIVE ONLY.







CURZON



ALDGATE UNDERGROUND

OLD SPITAFIELDS MARKET



WHITECHAPEL ART GALLERY

PORTSOCKEN PAVILION



THE TRUMAN BREWERY MARKETS



THE RELAY BUILDING, ET

**LOCATION**

Excellent transport to the rest of London's business and cultural communities that is unparalleled to anywhere in east London. Within a stones throw from key London locations such as Spitafields Market, Whitechapel and Liverpool Street Station.

**ALDGATE & WHITECHAPEL**

Aldgate & Whitechapel is one of the best connected areas in London with several tube and mainline stations within easy walking distance of The Relay Building. There are four tube lines within six minutes walk and both Liverpool Street and Fenchurch Street National Rail stations are under 10 minutes away.

Crossrail, arriving at Liverpool Street and Whitechapel further reduce journey times across London.



## POINTS OF INTEREST

1. Brick Lane
2. Commercial Street
3. Petticoat Lane Market
4. Whitechapel Gallery
5. Old Spitafields Market

## RESTAURANTS

6. BiFe
7. Gunpowder
8. Ottolenghi
9. The Culpeper
10. Unity Diner

## BARS & COFFEE HOUSES

11. Apples & Pears
12. Blacksheep Coffee
13. Lemn Street Tavern
14. The Buxton
15. Exmouth Coffee Company

## WELLNESS

16. 1 Rebel
17. Curzon
18. Orangetheory Fitness
19. Swingers Crazy Golf
20. Evolve Fitness



# DISCOVER EAST LONDON





# CONNECT WITH US:

NEWTON PERKINS

Jonathan Beilin  
jb@newtonperkins.com  
07967 392 016

Nick Russell-Smith  
nrs@newtonperkins.com  
07918 588 107

Alice Wiley  
aw@newtonperkins.com  
07546 695 724

CBRE

David Wilson  
david.t.wilson@cbre.com  
07584 339 242

Dana Henry  
dana.henry@cbre.com  
07494 232 304

CBRE & Newton Perkins gives notice that these particulars are set out as a general outline only for the guidance of intending Purchasers or Lessees and do not constitute any part of an offer or contract. Details are given without any responsibility and any intending Purchasers, Lessees or Third Party should not rely on them as statements or representations of fact, but must satisfy themselves by inspection or otherwise as to the correctness of each of them. No person employed or engaged by Compton has any authority to make any representation or warranty whatsoever in relation to this property.  
August 2023. Design by Studio185.london | 404